



MATILD PALACE
BUDAPEST

MATILD PALACE, A LUXURY COLLECTION HOTEL, BUDAPEST

THE LUXURY COLLECTION HOTELS & RESORTS



INDEX

[Budapest, The Pearl of the Danube](#)

[About Matild Palace](#)

[Guestrooms & Suites](#)

[A True Epicurean Destination](#)

[Meetings and Events](#)

[Swan Spa](#)

[Hotel Contacts](#)



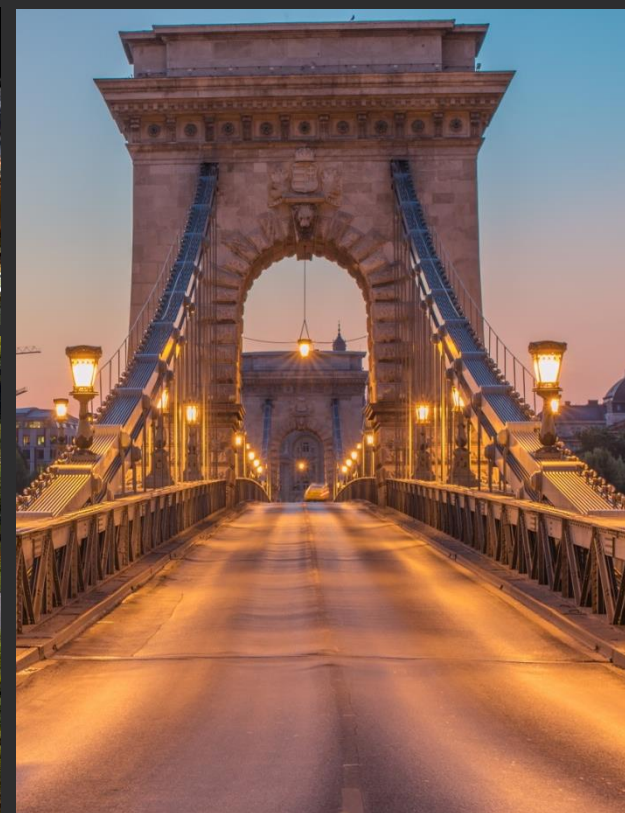
BUDAPEST

Budapest is one of Europe's most fabled cities with a wealth of connections (161 destinations and 951 flights per week), a storied heritage and many cultural sites, an exceptionally rich offering of natural thermal baths, an excellent culinary scene, a world-class classical music scene, a pulsating nightlife increasingly appreciated among European youth, many river cruise options, international festivals, and international sports events such as F1.

With its sheer grandeur and architectural splendor, this beautifully bridged European capital, located on the banks of the Danube river, is often called “The Pearl of the Danube” or “Paris of the East”.



MATILD PALACE, A LUXURY COLLECTION HOTEL, BUDAPEST



AN ICON RETURNS. YOUR STORY BEGINS.

THE
LUXURY
COLLECTION®

AN ICON RETURNS.
YOUR STORY BEGINS.

MATILD PALACE, A LUXURY COLLECTION HOTEL, BUDAPEST
HUNGARY



AN ICON RETURNS.
YOUR STORY BEGINS.

MATILD PALACE

Matild Palace, a Luxury Collection Hotel, Budapest redefines elegance in Hungary.

As one of the most iconic buildings in Budapest, the hotel boasts a highly distinctive ambience representative of its Hungarian heritage, which runs beautifully through its core and is unmistakable from the moment guests step foot through the front doors.





GATEWAY TO ALLURING BUDAPEST

Located in the heart of Budapest, between famous Váci Utca, Szabad Sajtó Utca, and Duna Utca, just a stone's throw from the Danube, and creating a gateway to Elizabeth Bridge.

- Budapest International Airport – 21 km
- Váci Street – 0 meters
- St. Stephen's Basilica – 1.2 km
- Széchenyi Chain Bridge – 1.2 km
- Buda Castle – 1.9 km
- Hungarian Parliament – 2 km
- Margaret Island – 4.3 km
- Heroes' Square – 3.5 km
- Hungarian State Opera – 1.4 km
- Gellért Hill – 1.5 km
- Széchenyi Thermal Bath – 4 km





MATILD PALACE

A TREASURED LEGACY

Built during the Belle Epoque era, in 1902, by Kálmán Giergl and Flóris Korb, the Matild Palace was developed under the patronage of Her Imperial and Royal Highness Maria Klotild of Saxe-Coburg and Gotha to serve as the social hub of the city. The Duchess dreamed of the twin palaces to greet those who enter the bridge as a graceful lady. Thus, the Duchess asked the famous architects, named after projects like Liszt Ferenc Academy of Music, to draw up the plans. Korb and Giergl envisioned of an English Baroque palace on either side of the road that would serve as the gateway to the bridge under construction. The neo-baroque palace is listed as a UNESCO world heritage site and is under the monumental protection since 1977.





MATILD PALACE

A CENTURY OF INNOVATION

- The first elevator (OTIS Brand) started operating in this building.
- A Revolutionary construction technique for its time: constructed with a steel metal structure, then clad in decorative carved stone.
- Matild Palace has the first cafe house and shopping center opening after WW2.
- Gyula Krúdy produced the main bulk of his fictional work in the period 1897-1920, Szindbád, the symbolically reimagined figure of Sindbad the Sailor, the mythic wanderer of The Arabian Nights. The major parts of his series and novels were written in the Matild Palace.





MATILD PALACE

BACK TO GRANDEUR

The iconic gem of Budapest which is under monumental protection has been lovingly restored to represent its truly majestic grace.

Together with Monumental Authority, the UNESCO protected palace underwent a 5 years restoration that includes major improvements, but particular attention was paid toward keeping its historical integrity throughout the restoration process. Today the Matild Palace is restored to it's original grandeur, bringing the facade, passage, staircases and historical café back to their original Belle Epoque elegance.



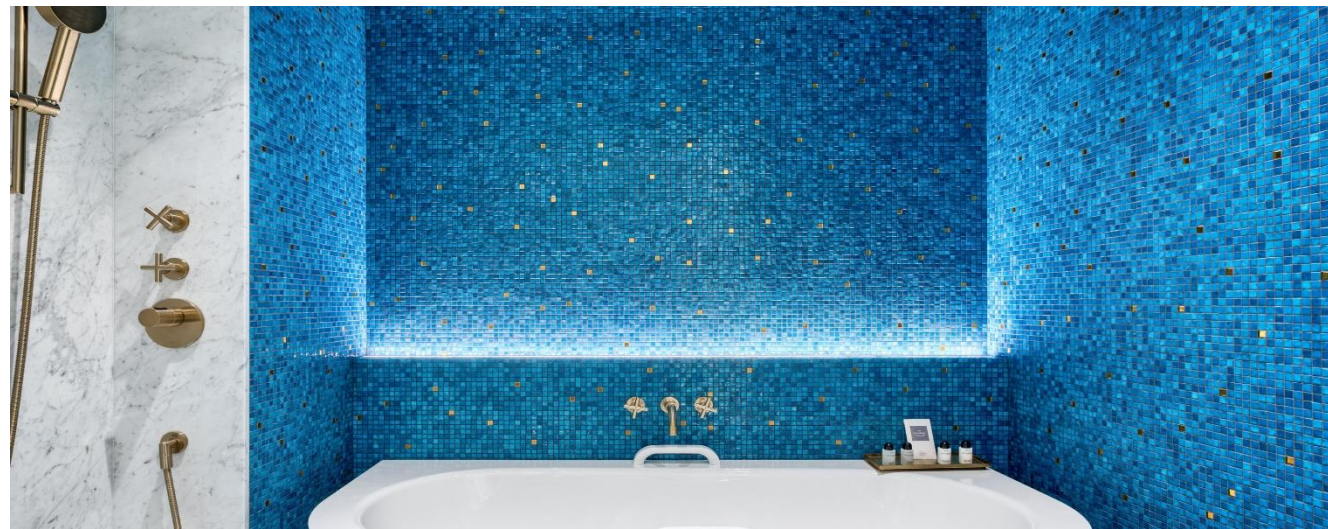
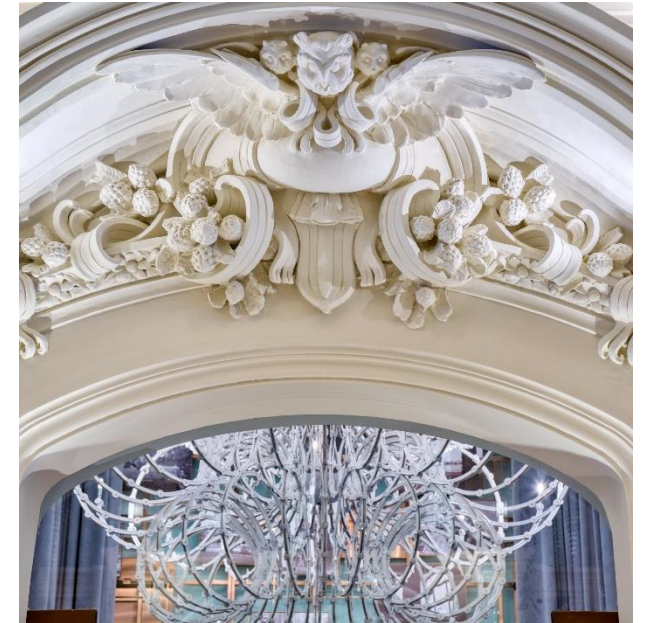
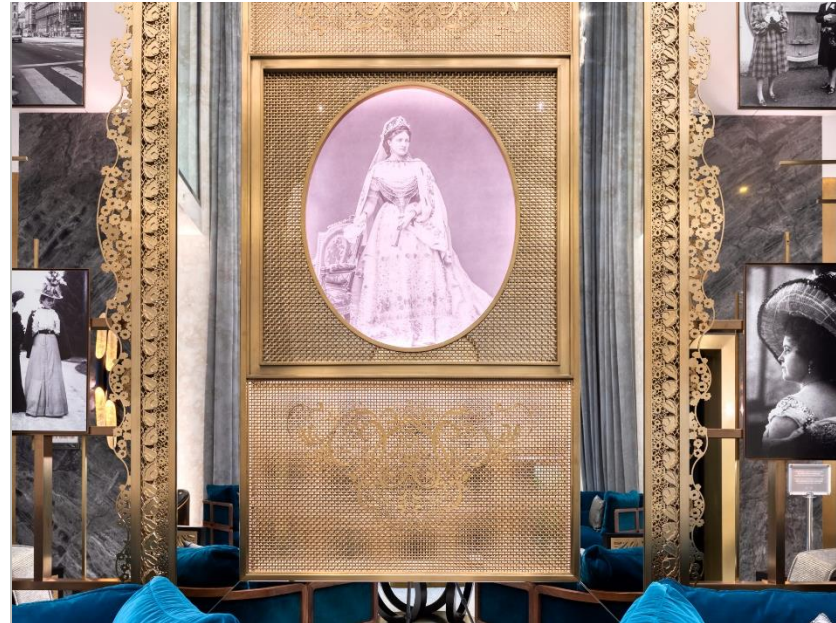


MATILD PALACE

A VISIONARY DESIGN

The transformative design of Matild Palace by the award-winning MKV Design provides a journey: From an imperial palace once the epicenter of the city for the royalties and elite, to a modern new playground for today's discerning leisure and business traveler, self-confessed artisans of leisure, and local foodies.

Once inside, the effortlessly charming yet contemporary comforts of the Matild Palace are immediately recognizable and upon walking through the hotel, its design takes guests on an enchanting passage through time.



THE
LUXURY
COLLECTION®



MATILD PALACE
BUDAPEST

HISTORICAL PASSAGE
MATILD PALACE, A LUXURY COLLECTION HOTEL, BUDAPEST



THE
LUXURY
COLLECTION®



MATILD PALACE
BUDAPEST

RECEPTION
MATILD PALACE, A LUXURY COLLECTION HOTEL, BUDAPEST



MATILD PALACE, A LUXURY COLLECTION HOTEL, BUDAPEST

GUESTROOMS AND SUITES

AN ICON RETURNS. YOUR STORY BEGINS.





GUESTROOMS AND SUITES

AN INDIGENOUS EXPERIENCE

Guests will discover an exceptional choice of 111 elegantly appointed rooms and 19 suites, with the palatial high-ceiling bedrooms, spectacular Danube river views, and the convenience of family-friendly connecting rooms.

Guest rooms feature unique and delicate detailing such as headboards with Hungarian handcrafting, Hungarian style fish bone design parquet floors and artwork referencing Budapest literature.

- 111 guestrooms (322.9 – 527.4 ft²)
- 9 Elisabeth Bridge Suite (51 – 62 sq.m.)
- 1 Loft Suite (74 sq.m.)
- 7 One Bedroom Suite (54-64 sq.m.)
- 1 Crown Tower Suite (92 sq.m.)
- 1 Maria Klotild Royal Suite (150 sq.m.)





GUESTROOMS AND SUITES

SLEEPING EXPERIENCE

- Signature The Luxury Collection mattresses
- King or double beds
- Luxury Frette Linen
- Pillowtop mattress and duvet
- Feather pillows (non-allergenic options available)

FOOD & BEVERAGE EXPERIENCE

- 24 hours in-room dining by Wolfgang Puck
- Complimentary bottled water
- Complimentary coffee & tea in the room
- Welcome amenity by our Executive Chef upon arrival

IN-ROOM BATHING EXPERIENCE

- Heated marble floors
- Grohe Sensia Arena automatic shower toilets
- Budapest Thermal SPA inspired, glass mosaic wet areas, including separate bathtub, rain forest shower, marble bench
- Dornbracht antique brass faucets and showerheads
- Frette bathrobes and slippers
- Hairdryer
- 350 thread count towels
- Double vanities (Single vanity in Loft Rooms)
- Lighted makeup mirror
- Byredo Le Chemin amenities

HOSPITALITY SERVICES

- Daily evening turndown service
- Complimentary newspaper delivery
- Connecting and interconnecting rooms are available

GUEST ROOM TECHNOLOGY

- 55" Mirror Image OLED TVs in rooms
- 65" Mirror Image OLED TVs in suites
- Chromecast
- Premium TV channels
- Button controlled curtains
- Button controlled Lutron lighting systems
- Occupancy sensors
- Visual and audible fire alarm
- Sprinkler
- Individually controlled Air Conditioning system
- USB outlets on bedsides
- In-room safe
- High-speed Wi-Fi
- Cordless telephone
- JBL Alarm clock radio with Bluetooth connection

THE
LUXURY
COLLECTION®



MATILD PALACE
BUDAPEST

DELUXE ROOM



THE
LUXURY
COLLECTION®



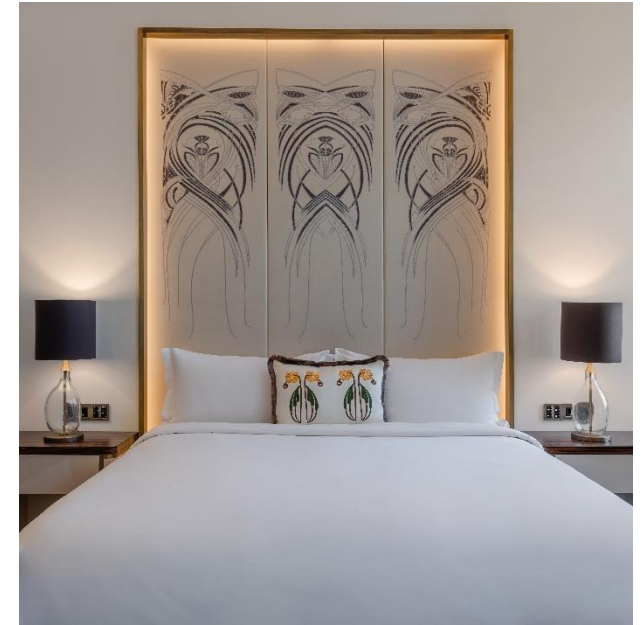
MATILD PALACE
BUDAPEST

DELUXE ROOM, BATHROOM





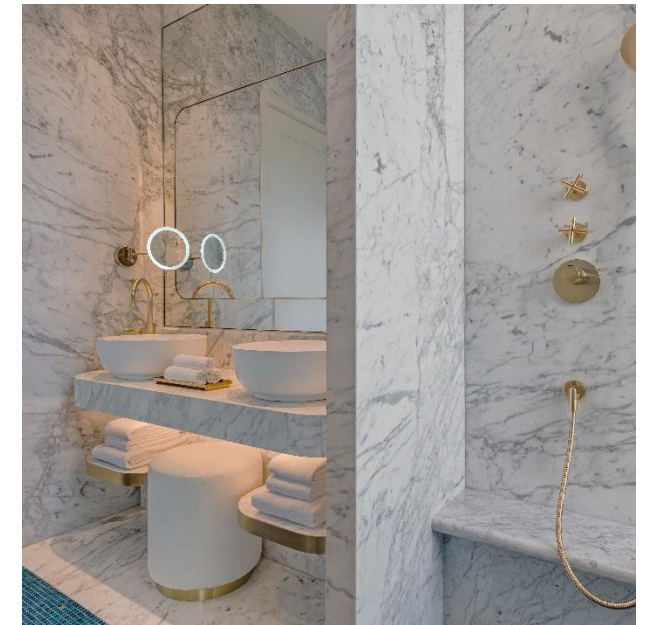
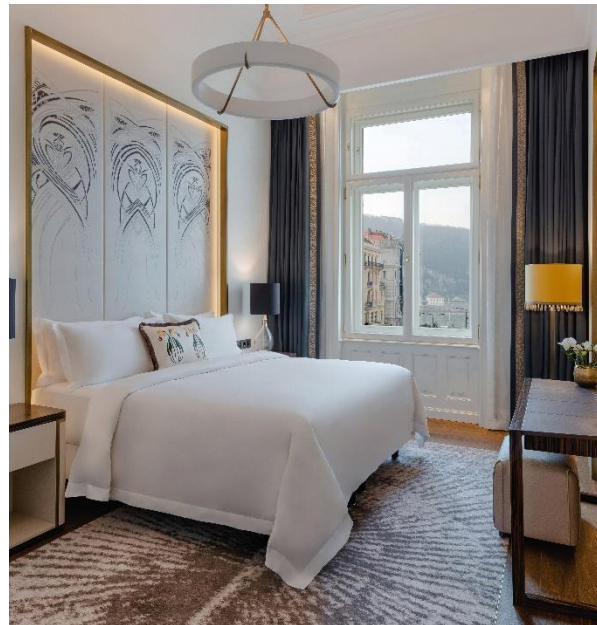
DELUXE ROOM KING



Room and Suite sizes and configurations vary based on their location and floor.



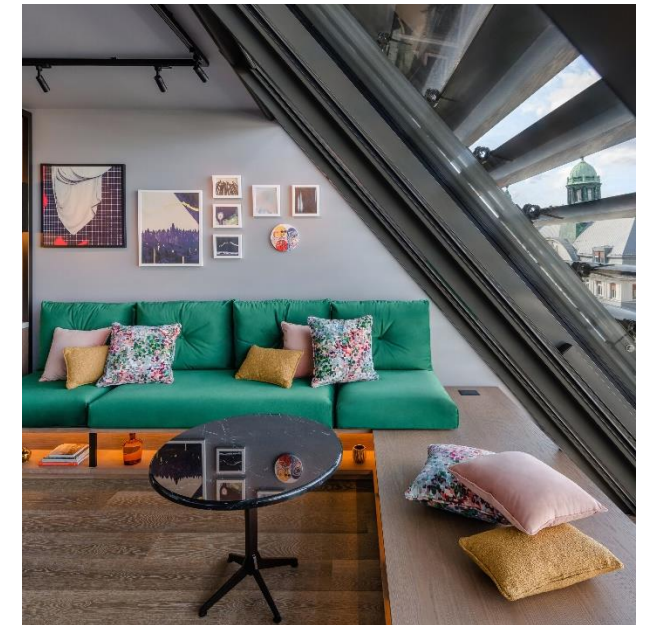
DANUBE RIVER VIEW ROOM



Room and Suite sizes and configurations vary based on their location and floor.



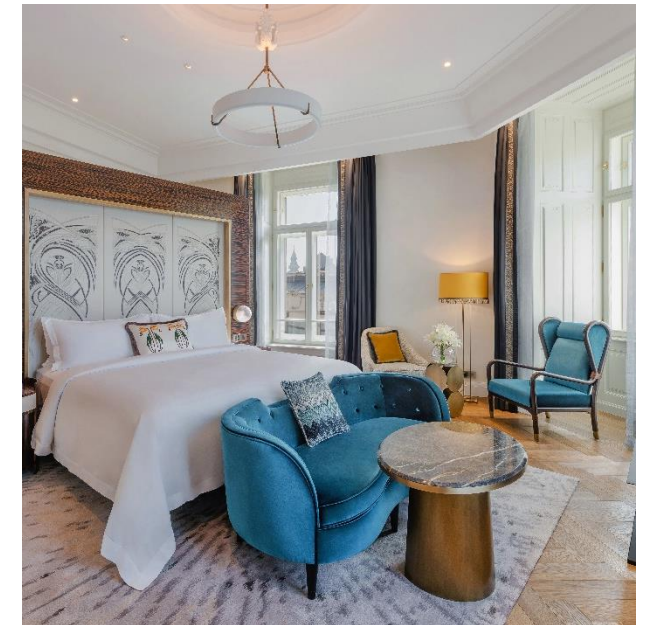
LOFT ROOMS



Room and Suite sizes and configurations varies based on the location and floor.



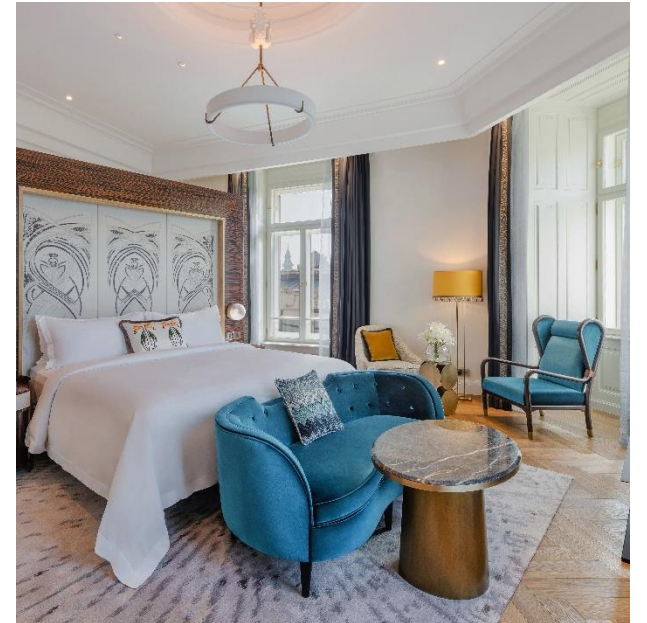
ELIZABETH BRIDGE SUITE



Room and Suite sizes and configurations vary based on their location and floor.



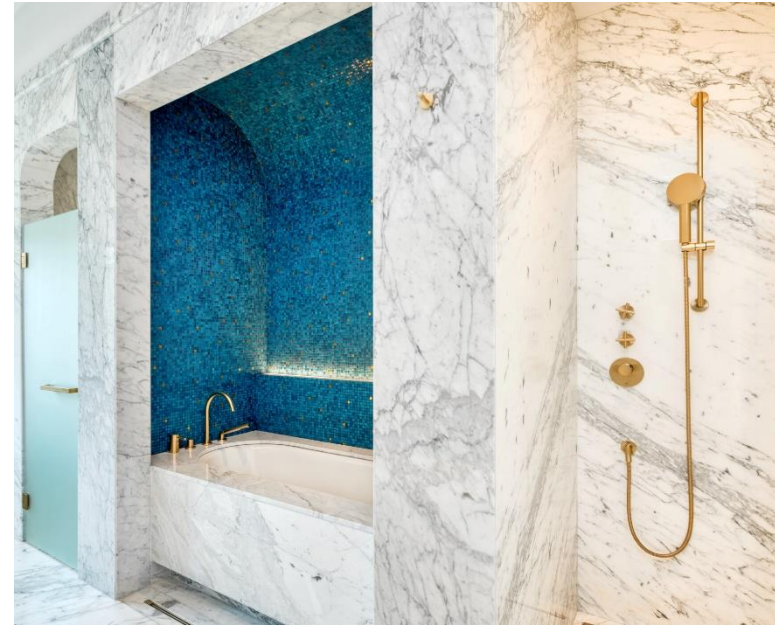
ELIZABETH BRIDGE SUITE



Room and Suite sizes and configurations vary based on their location and floor.



ONE BEDROOM SUITE



Room and Suite sizes and configurations vary based on their location and floor.



CROWN TOWER SUITE

STRIKING VIEWS OF BUDAPEST FROM YOUR OWN TOWER

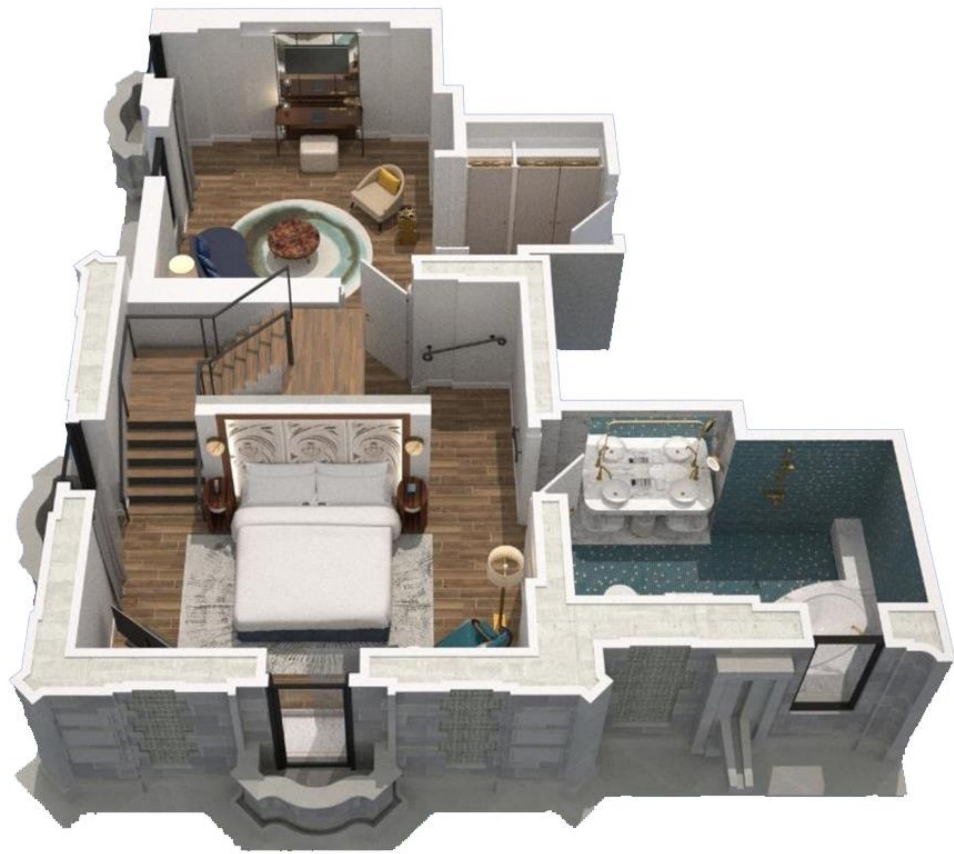
Crowning Matild Palace with its 5th-floor location, the one-bedroom Tower Suite is the first suite in Hungary with a 48-meter-high dedicated tower, providing breathtaking 360-degree views of the city and Danube River over the rooftops of Budapest.

The unique design of the tower, inspired by the crown of Archduke Joseph Karl of Austria, boasts 76 square meters of space across two floors boasting a remarkable bathroom.

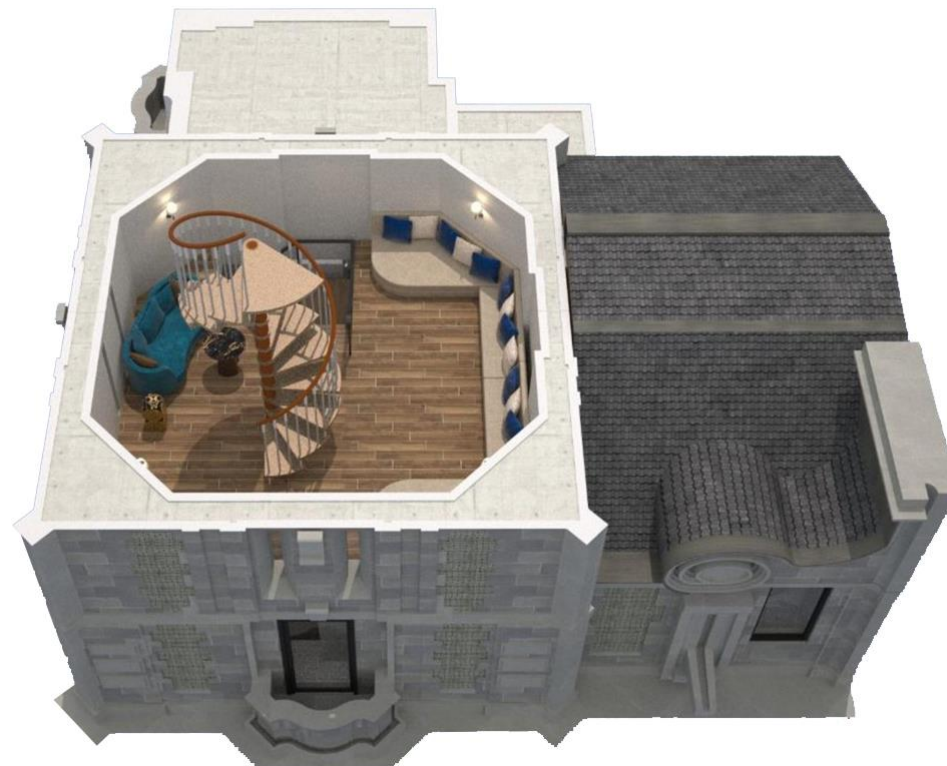




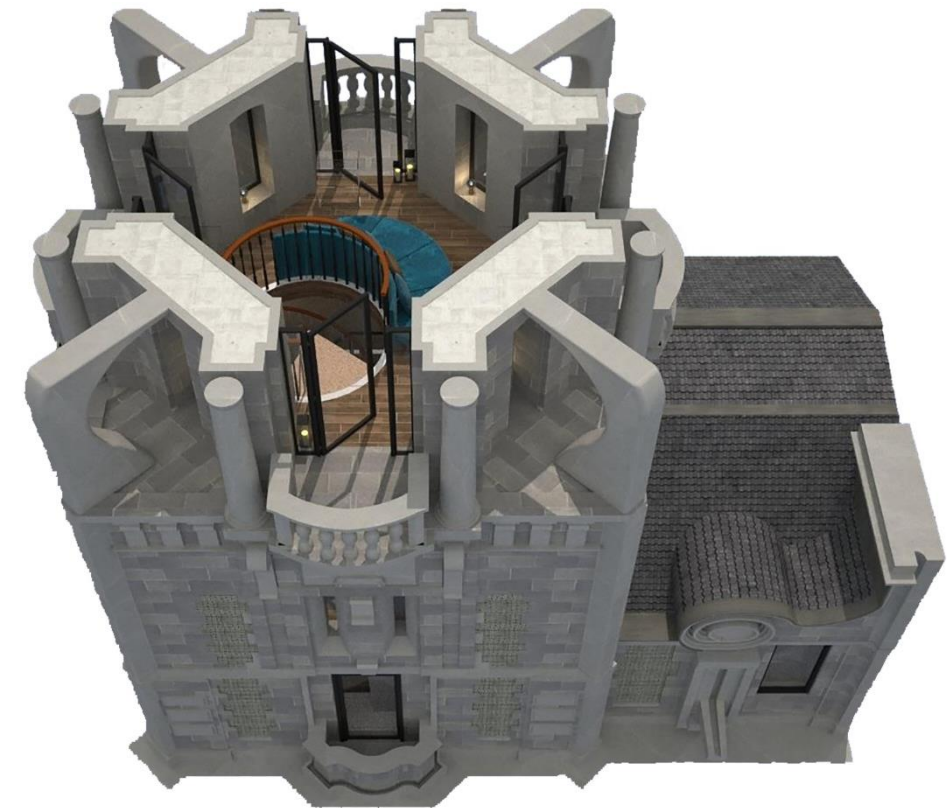
CROWN TOWER SUITE



LEVEL 1



LEVEL 2



LEVEL 3



MARIA KLOTILD ROYAL SUITE

The 150 square meters one-of-a-kind Maria Klotid Royal Suite provides awe-inspiring views of the Danube River and features a spacious master bedroom with paneled doors and walls, a spacious bathroom including a sculptural crystal pendant, a luxurious mix of mosaics and book matched white marble, a living room with a mix of modern and historical furniture items, a dining table for eight, and a separate study room.

Two additional rooms can be connected to create a spacious three-bedroom apartment with over 270sqm of space.





MARIA KLOTILD ROYAL SUITE including connecting rooms





MARIA KLOTILD ROYAL SUITE, BEDROOM

THE
LUXURY
COLLECTION®



MATILD PALACE
BUDAPEST

MARIA KLOTILD ROYAL SUITE, BATHROOM

THE
LUXURY
COLLECTION®

A TRUE EPICUREAN DESTINATION

Menu
local beets
rye infusedillet
and short ribs
pastry





CULINARY EPICENTER OF BUDAPEST

Through its strategic partnership with the worldwide-renowned industry leader and trendsetter Master Chef Wolfgang Puck, Matild Palace brings a new era of gastronomy and entertainment to the city with its world-class concepts, exceptional venues as well as contemporary cabaret shows.

The Michelin starred chef carries an undeniable cachet, synonymous with a bold, innovative school of cooking that redefined fine dining in America and around the world. His trademark dishes, coupled with his unmistakable panache and passion, have revolutionized the culinary industry.

After many years away from his home, Austria, Wolfgang returns to his new home in Central Europe, Budapest, with three exceptional concepts that will all be located at Matild Palace, together with his culinary team that includes the best talent around Hungary.

The partnership also extends to include the In-room Dining for the guests to dine in the convenience of their room, and all the meeting and social events catering.



WOLFGANG PUCK

*Stella Feher
Exec. Sous Chef*

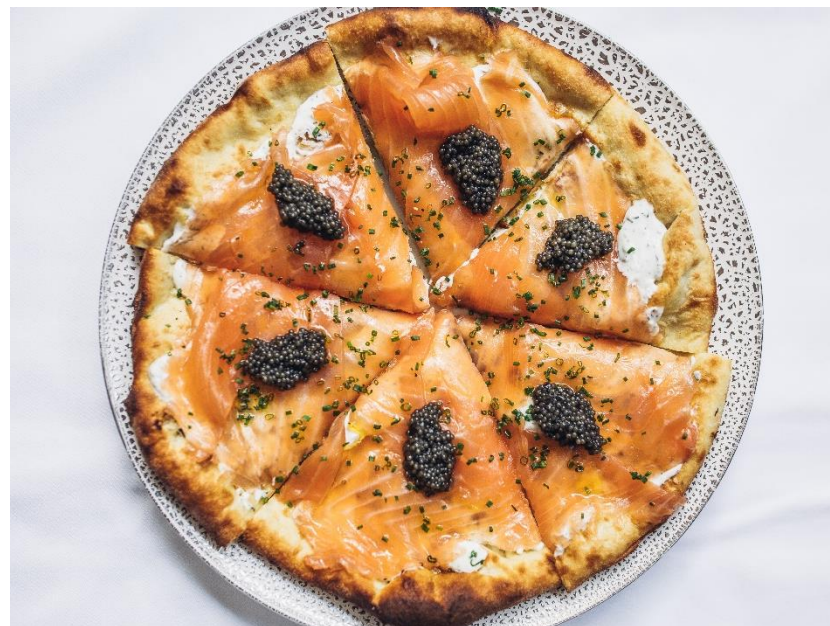


SPAGO BY WOLFGANG PUCK

THE EUROPEAN DEBUT OF THE BEVERLY HILLS ICON

Worldwide-renowned industry leader and trendsetter Master Chef Wolfgang Puck brings the Beverly Hills culinary and social phenomenon Spago to Budapest, igniting the city's dining scene into a gastronomic epicenter.

Spago by Wolfgang Puck Budapest is the first European outpost of Wolfgang's flagship restaurant. Maintaining its leading position as one of the pioneers of the gastronomy world, setting trends in culinary arts, service, and style, Spago caters to a brand new gastronomic culture in the city by blending the chef's iconic Californian cuisine and Magyar culinary skills, traditions and choice of local products.





SPAGO BY WOLFGANG PUCK

AN ICON RETURNS. YOUR STORY BEGINS.

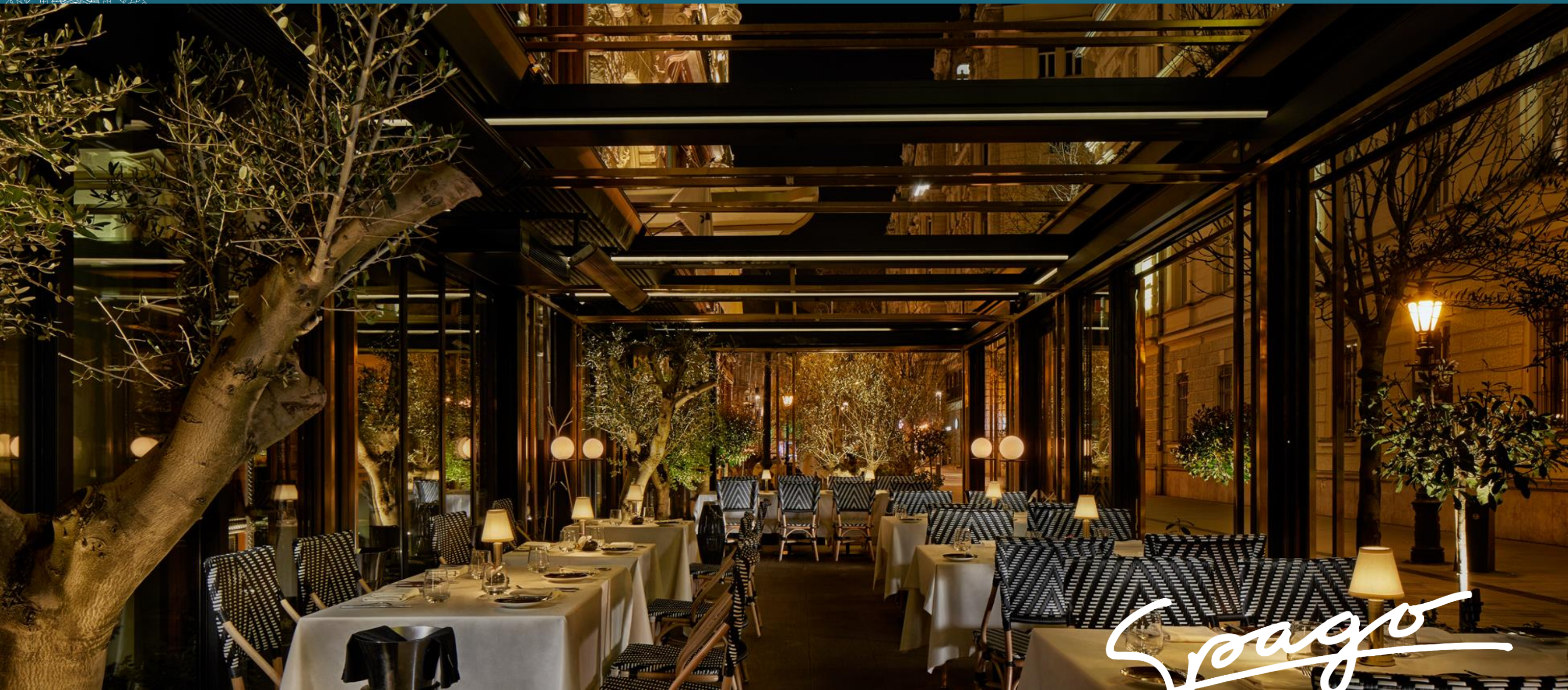
Spago
BY WOLFGANG PUCK



SPAGO BY WOLFGANG PUCK

AN ICON RETURNS. YOUR STORY BEGINS.

Spago
BY WOLFGANG PUCK



SPAGO BY WOLFGANG PUCK

AN ICON RETURNS. YOUR STORY BEGINS.

Spago
BY WOLFGANG PUCK



MATILD CAFÉ & CABARET

THE RE-BIRTH OF A BUDAPEST ICON

The Matild Café, formally named the Belvarosi Café, dates back to 1901. The restoration of the two-storey café is a dramatic re-imagining of the most popular address for local elite and influencers of the Belle Epoque era, and the first café in Budapest after World War 2.

A flawless coffee, bar, and pastry counter that also produces the exquisite Matild Cake, offers central European comfort food and peerless service in an authentic and historic room.





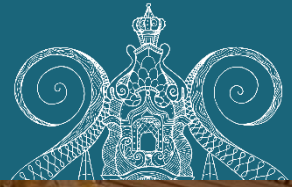
MATILD CAFÉ & CABARET

LATE-NIGHT CHIC

This iconic gem of Budapest which is under monumental protection has been lovingly restored and renamed to represent its truly majestic home, bringing back the late-night chic with cabaret shows from the 1960s.

The daytime is easy-going at the café, and at night the Hungarian and international cabaret shows, performed on the hydraulic elevated stage, which was uncovered during the excavation, turn Matild Café into a distinguished, glamorous, exciting and lively sociable hub of the city.

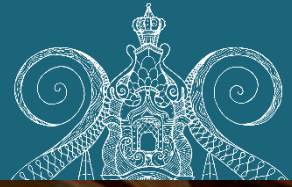




MATILD CAFÉ & CABARET

AN ICON RETURNS. YOUR STORY BEGINS.

MATILD
CAFÉ & CABARET
1901



MATILD CAFÉ & CABARET

AN ICON RETURNS. YOUR STORY BEGINS.

MATILD
CAFÉ & CABARET
1901





MATILD PALACE, A LUXURY COLLECTION HOTEL, BUDAPEST

GASTRO STREET

Bringing together Spago by Wolfgang Puck and Matild Café & Cabaret on the Duna Street, Matild Palace Budapest introduces an exquisite new dimension to the dining scene of the city with a brand-new gastronomic destination: The first Gastro Street in Budapest, a 5 meters by 80 meters culinary paradise available year long and led by visionary epicureans, seducing your senses with simple aromas, local cuisine, and the buzz of fashionable society.

Spago
BY WOLFGANG PUCK



MATILD
CAFÉ & CABARET
1901

AN ICON RETURNS. YOUR STORY BEGINS.



THE DUCHESS

CAN YOU FIND THE DUCHESS?

Hidden amongst Budapest's famed roofscape, with a view towards the Elisabeth Bridge, Danube River, and Gellert Hill, The Duchess is a secret liquor library that provides a new perspective on Budapest vistas.

Inspired by the Archduchess Maria Klotild, who in 1884 commissioned the Matild Palace to include a clandestine rooftop section as a rendezvous for the Decadence Movement, the uber-chic bar is accessed through a hidden entrance of private elevators and transports the guests to another world through its concealed and decadent story of glamour, gastronomy, mixology and a curated soundtrack.

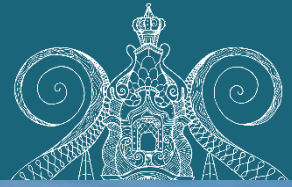




THE DUCHESS, ROOFTOP BAR

AN ICON RETURNS. YOUR STORY BEGINS.

THE DUCHESS

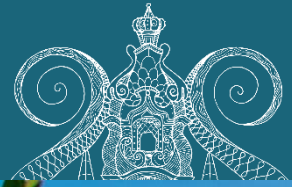


THE DUCHESS, ROOFTOP TERRACE

AN ICON RETURNS. YOUR STORY BEGINS.



THE DUCHESS



THE DUCHESS, ROOFTOP TERRACE

AN ICON RETURNS. YOUR STORY BEGINS.

THE DUCHESS



MATILD PALACE, A LUXURY COLLECTION HOTEL, BUDAPEST

MEETINGS AND EVENTS

AN ICON RETURNS. YOUR STORY BEGINS.





EXCEPTIONAL MEETINGS & EVENT SPACES

EXQUISITE MEETINGS

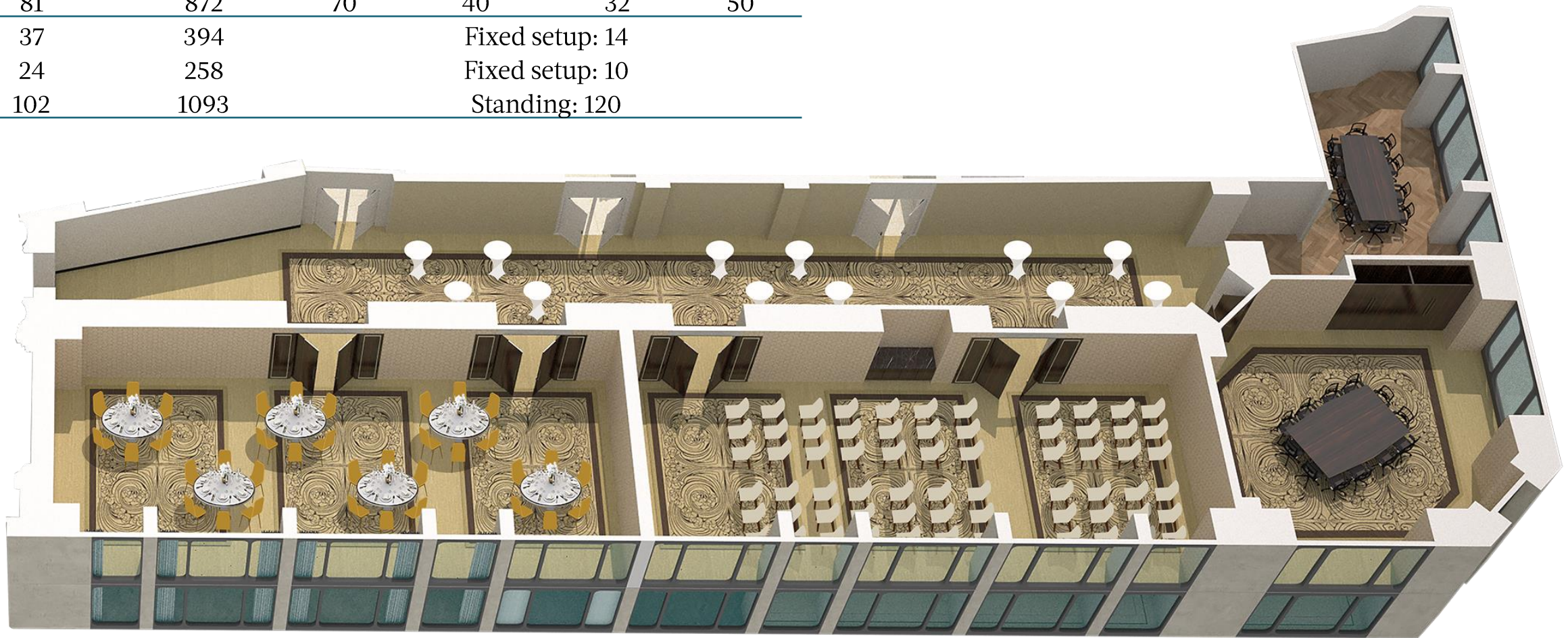
Matild Palace is poised to handle all business meetings or special events, whether large or more intimate.

The grand architecture of the hotel makes the perfect backdrop for corporate get-togethers and grand galas, and with dedicated planning experts on hand, the latest audio-visual equipment and custom floor plans, one can feel assured that the meeting or event will be truly memorable.





Meeting Room	Area (sq. m.)	Area (sq. ft.)	Theater	Schoolroom	U-Shape	Banquet
Duchess A	51	552	55	25	20	30
Duchess B	29	309	15	8	8	16
Duchess (A+B)	80	861	70	40	32	50
Duke A	28	298	15	8	8	16
Duke B	53	574	55	25	20	30
Duke (A+B)	81	872	70	40	32	50
Szindbád Boardroom	37	394		Fixed setup: 14		
Erzsébet Boardroom	24	258		Fixed setup: 10		
Pre-Function Space	102	1093		Standing: 120		



THE
LUXURY
COLLECTION®



MATILD PALACE
BUDAPEST

SZINDBAD BOARDROOM

THE
LUXURY
COLLECTION®



PALACE
BUDAPEST

DUKE & DUCHESS BANQUET HALLS



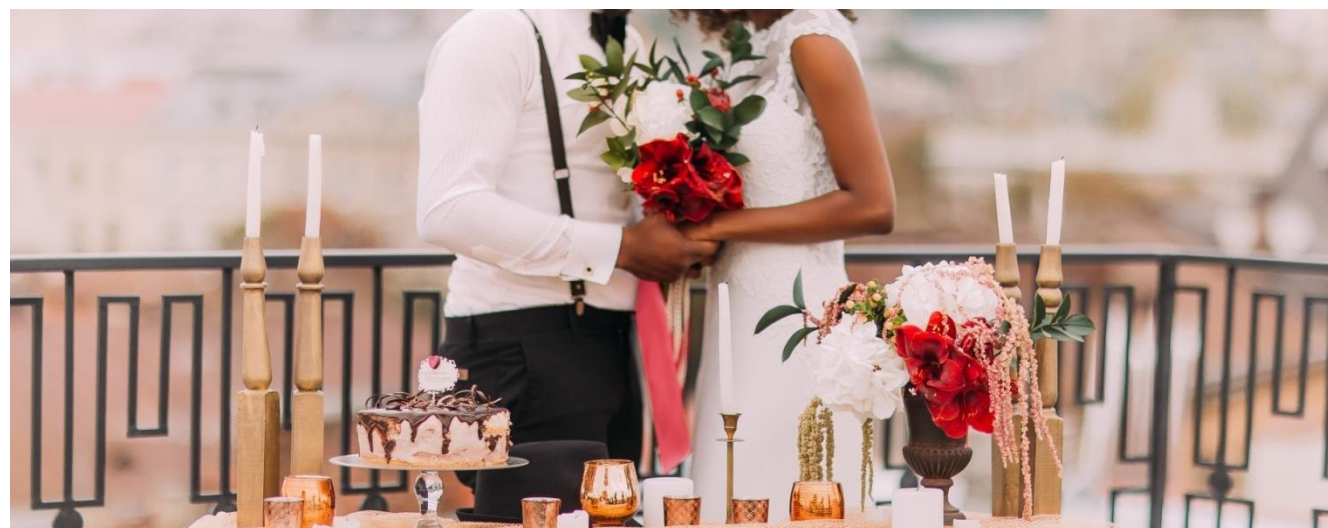
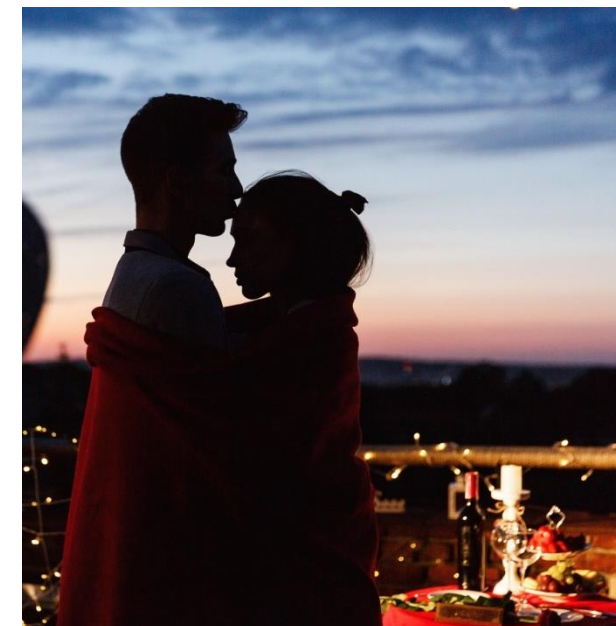


WEDDINGS AND PRIVATE EVENTS

ICONIC CELEBRATIONS

Whether it's a love story brought to life, a small and romantic wedding gathering, or a distinctive birthday or anniversary, Matild Palace, is the ideal location for such iconic life celebrations.

The hotel's talented culinary team and event planners will transform your vision into an unforgettable experience.

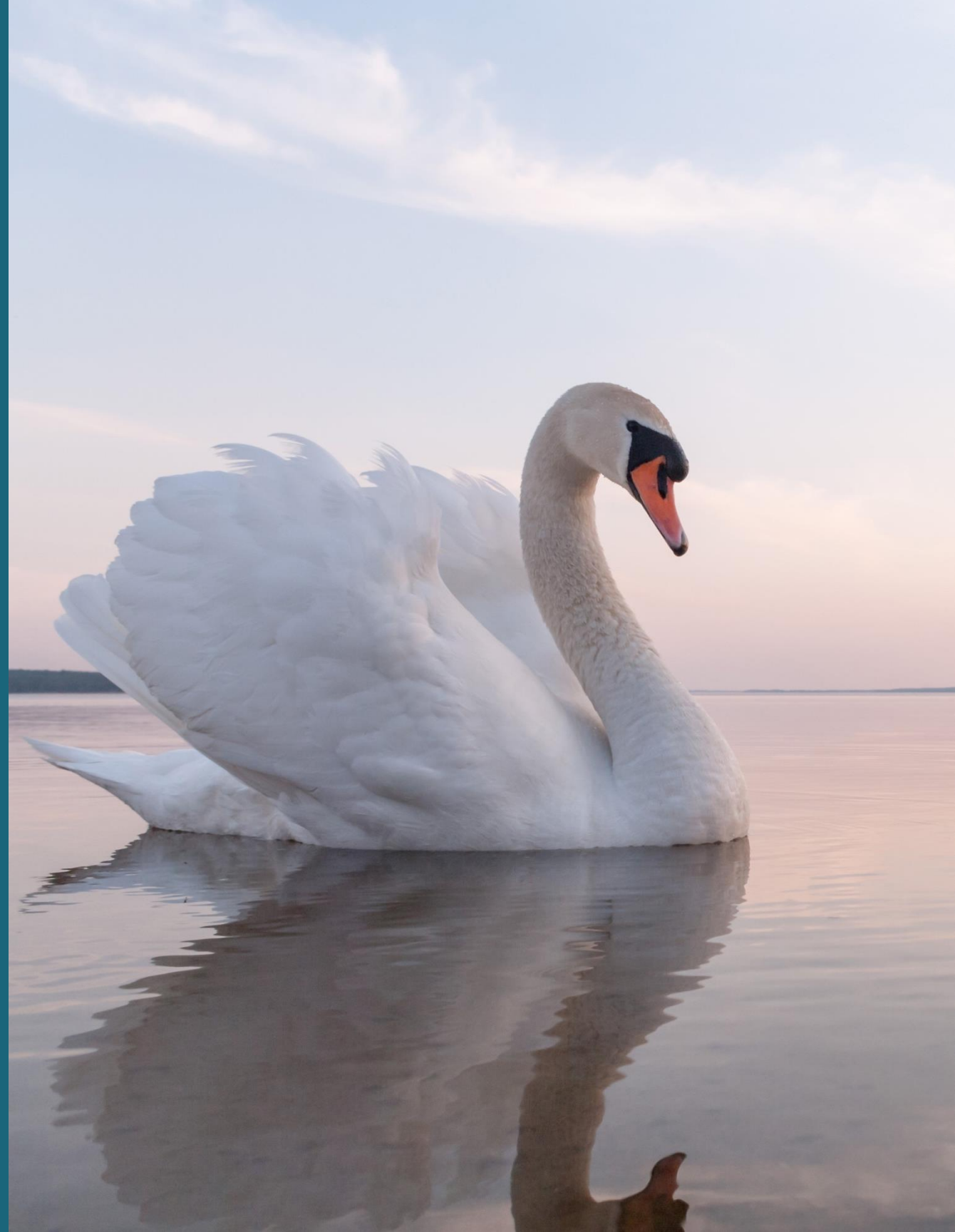




MATILD PALACE, A LUXURY COLLECTION HOTEL, BUDAPEST

SWAN SPA

AN ICON RETURNS. YOUR STORY BEGINS.





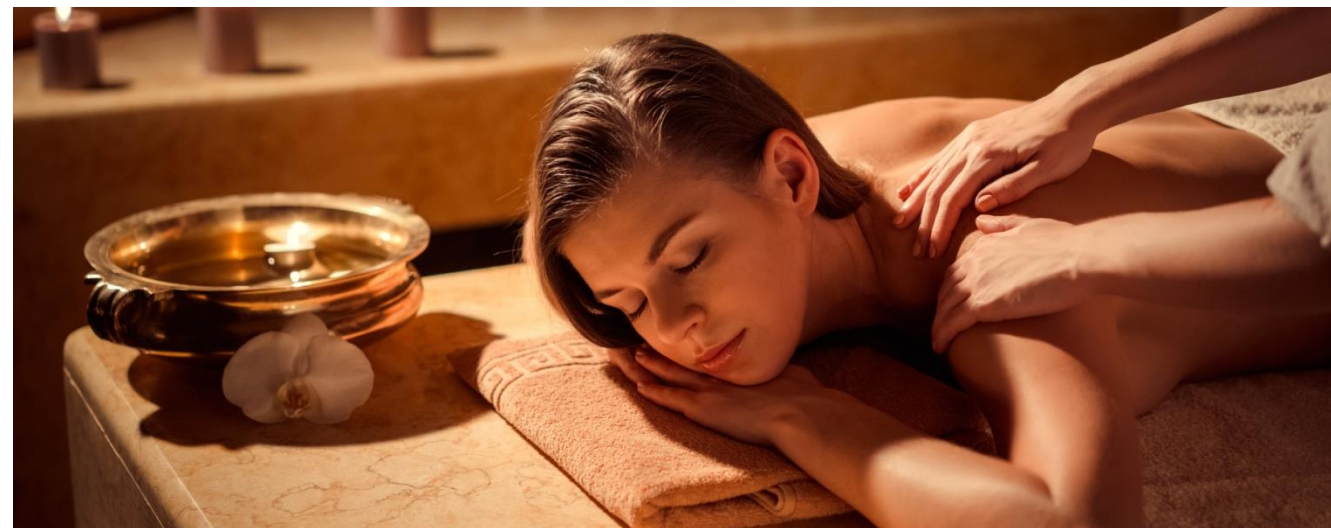
SWAN SPA

AN ELEGANTLY CRAFTED EXPERIENCE

Explore indigenous therapies at Swan Spa, the oasis of relaxation inspired by the Hungarian bath culture and the swan, a symbol of grace and beauty.

Indulge in our two treatment rooms including a couples suite, salt room, hammam, sauna and steam room for a Hungarian getaway. Luxurious ESPA products are used for all spa treatments.

For our guests that desire a more physical mind and body program, an ideal workout is available at our fitness center, which is outfitted with the latest equipment.





SWAN SPA RECEPTION



THE
LUXURY
COLLECTION®



SWAN SPA



SWAN SPA RELAXING AREA

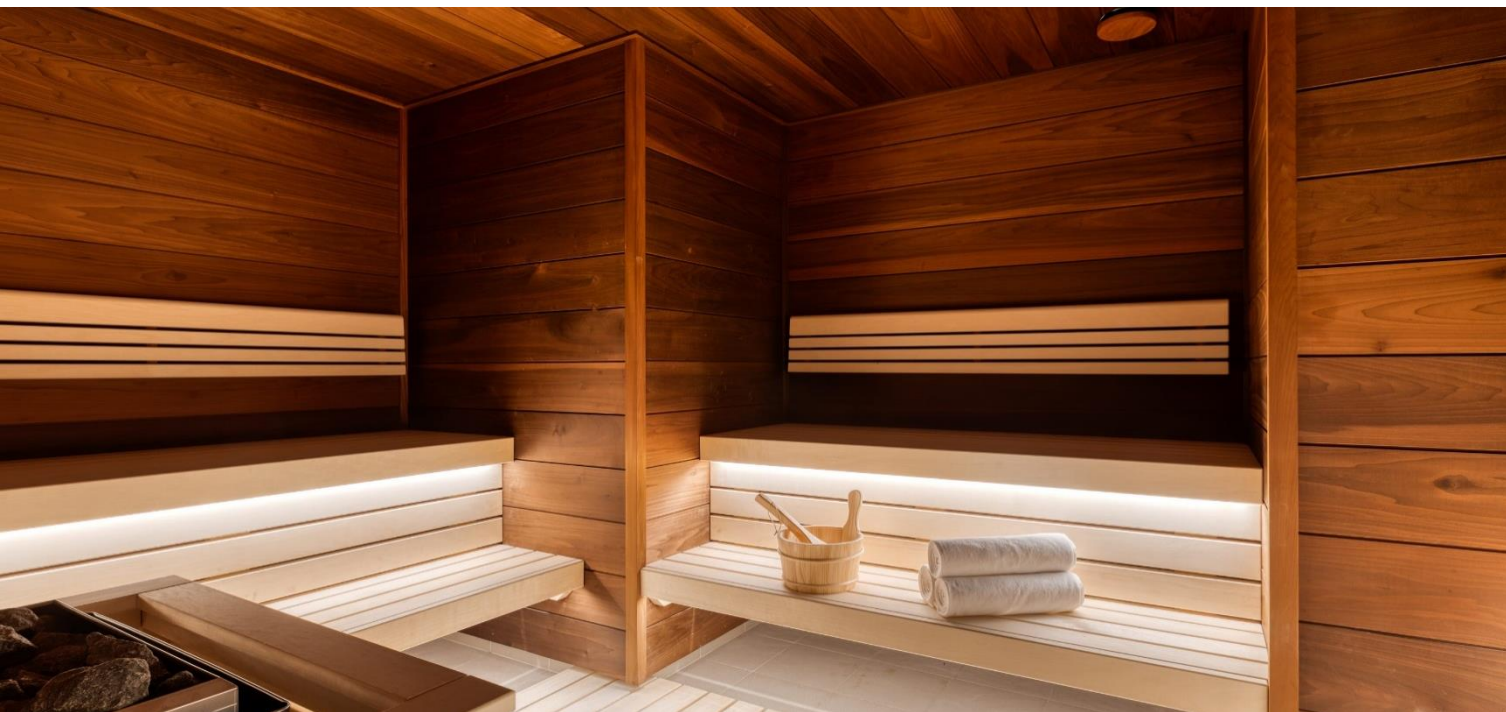
THE
LUXURY
COLLECTION®



SWAN SPA



SWAN SPA COUPLE TREATMENT SUITE



AN ICON RETURNS. YOUR STORY BEGINS.



MATILD PALACE, A LUXURY COLLECTION HOTEL, BUDAPEST

PROPERTY CONTACTS

Ali Can Demirok – EAM SALES & MARKETING

Váci Utca 36, 1056, Budapest, Hungary

Sales Office:

Váci utca 47, 1st floor, Office number 100,
1056, Budapest, Hungary

M: +36 (70) 534 0352

E: alican.demirok@matildpalace.com



MATILD PALACE
BUDAPEST

THE
LUXURY
COLLECTION®



MATILD PALACE
BUDAPEST

AN ICON RETURNS.
YOUR STORY BEGINS.

